



SmartZone 300 Quick Setup Guide, 5.1

This Quick Setup Guide provides basic instructions for setting up the Ruckus SmartZone 300 (SZ300) on the network. For information on advanced configuration and management options, see the Getting Started Guide and other appropriate documents, which are available for download from the Ruckus Support website:

<https://support.ruckuswireless.com/documents>

This Guide in Other Languages

请从以下网站获得该指南的简体中文版 <https://support.ruckuswireless.com>.

Vous trouverez la version française de ce guide à l'adresse suivante <https://support.ruckuswireless.com>.

このガイドの日本語版は <https://support.ruckuswireless.com> でご覧ください。

이 가이드의 한국어 버전은 웹 사이트 (<https://support.ruckuswireless.com>) 에서 확인하시기 바랍니다.

Veja a versão em português (Brasil) deste guia em <https://support.ruckuswireless.com>.

Puede ver la versión en español (América Latina) de esta guía en <https://support.ruckuswireless.com>.

Licensing Information

The SmartZone 300 (SZ300) comes pre-shipped with 10,000 temporary AP Capacity Licenses, which are valid for a period of 90 days from when the SZ300 is configured via the initial setup configuration. For operation beyond 90 days, you MUST buy permanent AP Capacity licenses. The purchased Licenses MUST be activated for them to become valid.

The management of the AP Capacity Licenses and the ability to activate the permanent License will be through the Ruckus Support Portal (<https://support.ruckuswireless.com>). An email will be sent to the User that is identified on the Purchase Order and full instructions as to how to activate the Licenses is included in the email. As a guide, full instructions can be found at <https://support.ruckuswireless.com/activate>.

Using the LiMAN (license management) portal on the Ruckus Support website, you can assign licenses to or from a SZ300 or move them to another SZ300 (see a summary of LiMAN features in the table below). To physically manage the distribution of licenses from the Support website to the actual SZ300, connect the SZ300 directly to the Internet.

NOTE: In the event that the SZ300 is not connected to the Internet, you can download the actual licenses from the Support Portal and manually upload to the specific SZ300.

For step-by-step instructions on how to activate the SZ300's licenses, see [Step 5: Activate the SZ300's Licenses](#) on page 3.

TABLE 1 LiMAN features and how to activate them on the SZ300

LiMAN Features	SZ300 Online (Connected to the Internet)	SZ300 Offline (Disconnected from the Internet)
<ul style="list-style-type: none"> Register SZ300 controllers, licenses, support entitlement Add capacity licenses to SZ300 controllers Remove licenses from one SZ300 and add to another 	<p>No action required. The SZ300 syncs with LiMAN automatically within 24 hours and applies the appropriate licenses.</p>	<p>Three steps required:</p> <ol style="list-style-type: none"> Download the license file from LiMAN. Log on to the SZ300, and then upload the license file from LiMAN. Download the license response file from the SZ300, and then upload it to LiMAN.

Warning Message for Missing AP Support Capacity License

Starting in SmartZone release 3.2, Ruckus has introduced a "Warning Message" feature to notify you if Support for AP Capacity Licenses has not been purchased.

This is a warning only in SmartZone 3.2 with full enforcement occurring in a later release. This warning

will only be displayed when you try to upgrade to a release beyond SZ 3.2 (i.e. SZ 3.2.1).

The message is purely informational and does not affect your ability to upgrade nor does it impact your service in any way. In order to upgrade your network, without any warning messages, you will need to have both a Controller Support Contract and Support on the AP Licenses as well.

For more information on purchasing of a Support for AP License, contact your Wireless Ruckus Sales representative.

Before You Begin

Before deploying Ruckus products, please check for the latest software and the release documentation.

- Release Notes and other user documentation are available at <https://support.ruckuswireless.com>.
- Software upgrades are available at <https://support.ruckuswireless.com/software>.
- Software license and limited warranty information are available at <https://support.ruckuswireless.com/warranty>.

Package Contents

- One SmartZone 300 appliance with two AC or DC power supply units and AC power cords or DC power cables.
- One rack mount kit
- Two front rack mount brackets and handles with fasteners
- Service Level Agreement/Limited Warranty Statement sheet
- Regulatory Statement sheet
- This *Quick Setup Guide*

What You Will Need

- An administrative computer (admin PC) with a connection to the local area network
- A web browser, such as Internet Explorer, Mozilla Firefox, Google Chrome or Apple Safari
- The IP address, netmask, gateway and DNS server addresses assigned to the SZ300—a static network address is strongly recommended.

Step 1: Connect the SZ300 to the Network

- Connect the SZ300 to a convenient power source, and press the power switch on the front panel. The LED shows a flashing green light as the SZ300 starts up.

When the SZ300 has started up successfully, the LED turns to a solid green light.

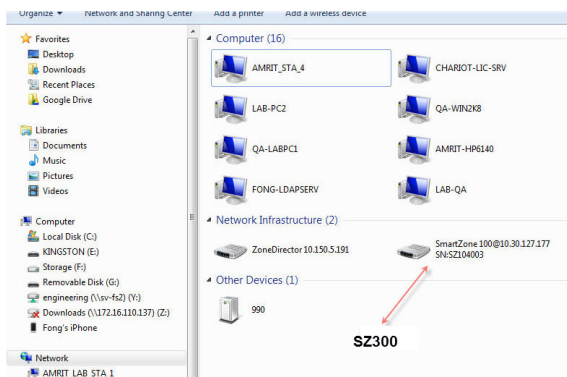
- Obtain an Ethernet cable. Connect one end of the Ethernet cable to any of the LAN ports with a black label on the SZ300 (yellow is management port), and connect the other end to your network's switch or router. See [Ethernet Port Color Reference](#) on page 2 for more information.

NOTE: The SZ300 is a Universal Plug and Play (UPnP) device. Once you connect it to the network, it will automatically configure itself, obtain an IP address, and make its presence known to other devices on the network.

- Go to the admin PC and verify that the SZ300 is now discoverable on the network. On Windows 7 and Windows 8, go to **Control Panel > Network and Internet > View network computers and devices**, and locate the **Network Infrastructure** section. The SZ-300 should appear there.

NOTE: If you prefer not to use UPnP, you can type the IP address of the SZ300 into a web browser instead. In case there is no DHCP server on the network, the default IP address and URL of the SZ300 is `http://192.168.2.2:8080` with a network mask of `255.255.255.0`. Otherwise, an IP address is assigned automatically from your existing DHCP service.

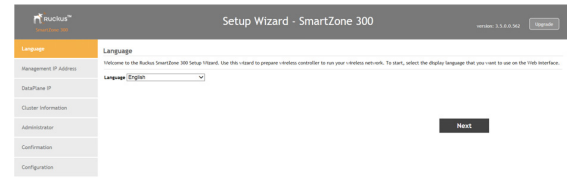
FIGURE 1 The SZ300 appears in the **Network Infrastructure** section



- Double-click the SZ300 that appears in the **Network Infrastructure** section to start the SZ300's Setup Wizard.

A web browser loads and the SZ300's Setup Wizard appears, displaying the **Language** screen.

FIGURE 2 The Language screen of the Setup Wizard



Ethernet Port Color Reference

TABLE 2 Ethernet ports on the SZ300

Port Color/Label	Port Traffic Type
Black	Control interface: Access network traffic (SSH, HTTPS)
Orange	Cluster interface: SZ-C inter-node traffic
Yellow	Management interface: Web interface, command line interface, northbound interface

Step 2: Complete the Setup Wizard

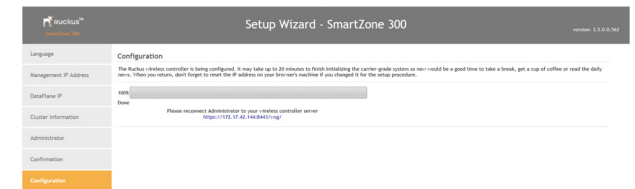
- When the Setup Wizard appears, complete the following screens:
 - Language:** Verify that English is selected.
 - Management IP Address:** Configure the IP address settings of the control, cluster, and management interfaces either by assigning addresses automatically (if a DHCP server exists on the network) or manually.
 - Cluster Information:** Select whether you want to create a new cluster with this SZ300 or to join an existing cluster on the network. If you want this SZ300 to join an existing cluster, you must type the cluster IP address and admin password in the boxes provided.
 - Administrator:** Set the administrator passwords for the web interface and the command line interface.

- When the **Confirmation** screen appears, verify that all the settings displayed on the screen are correct. If you need to make a correction, click **Back** until the appropriate setup screen appears, and make the changes.
- If they are all correct, click **Finish** to apply the settings and activate the SZ300 on the network. A progress bar appears and displays the progress of applying the settings, starting the SZ300 services, and activating the SZ300 on the network.

When the process is complete, the progress bar shows the message "100% Done." The page also shows the IP address through which you can access the SmartZone web interface to manage the appliance.

NOTE: Take note of this IP address. You will need this later to log on to the SZ300's web interface.

FIGURE 3 Take note of the IP address of the web interface



Step 3: Connect the SZ300 to the Network

- Connect one of the controller's LAN ports with a yellow label to the router or switch.
- Connect the other LAN port with a yellow label to another router or switch to which other SmartZone appliances (if present) are connected.

NOTE: Depending on your network setup, you may also connect both yellow-labeled ports to the same router or switch.

Step 4: Connect the Ruckus APs to the Network

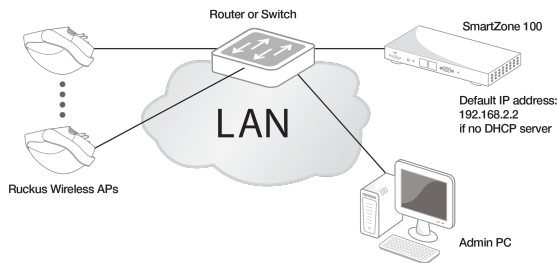
- Distribute the APs around your worksite.

- Record each AP's Ethernet MAC address (printed on the bottom of every AP), and note each device's exact worksite location.
- Connect the APs to a local power source or PoE enabled Ethernet switch.
- Using an Ethernet cable, connect the APs to the switch or router on the same network as the SZ300.

NOTE: Some Ruckus APs are PoE-capable. If connected to a Power over Ethernet switch, the APs can draw power through the Ethernet cables.

When the APs are powered on, they will automatically discover the SZ300 on the network if the DHCP server from which the APs are obtaining IP addresses also provides the SZ300 IP address via DHCP Option 43.

FIGURE 4 Connecting the admin PC, SZ300, and Ruckus APs to the network



Step 5: Activate the SZ300's Licenses

After you set up the SZ300 and verify that wireless clients are able to associate with managed APs successfully, you need to activate and assign the AP and Tunnel Licenses using the LiMAN (license management) portal on the Ruckus Support site.

Before You Begin

You must have a Ruckus Support portal account (including user name and password). You can use this account to access general Support site content including software upgrades, knowledge base articles and technical documents.

If you do not have a Support portal account, you will be required to register one before continuing with your product and licensing activation.

Every capacity and support license that you have purchased will have its own unique activation code and each must be activated for the license to become valid.

You will receive the activation code in a separate Support Purchase Acknowledgement (SPA) email for each license/support license.

Depending on the product, you may receive up to three (3) different SPA emails for all of your licenses. The first three characters of the activation code indicate the license type to which the code is applicable.

- LIC: AP Capacity License
- LIC: AP Tunnel License—CAPACITY-RXGW (Direct Tunnel)
- SUP: SUP: Support License—SUP-SZ300-EU/PTNR

Activating a SZ300's License/Support License

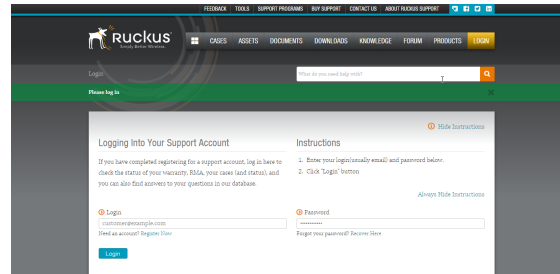
- Open the SPA email that you received from Ruckus.

FIGURE 5 The SPA email from Ruckus



- Log on to <https://support.ruckuswireless.com>.

FIGURE 6 Ruckus Support portal logon page



- Have the serial number of your SZ300 device ready.
- Click the link in the SPA email.
- Follow the onscreen instructions to activate the licenses purchased. When required, you will be prompted for your SZ300 serial number.

- It is important that you repeat steps #1 to #5 above for all licenses that you have purchased as this will simplify the "+License" workflow in the next step.
- After you finish activating all of your licenses, you need to assign them to your LiMAN account. Click the **LiMAN** button, which appears after a license has been successfully activated (see Figure 7).
 - If your device is listed, click its serial number and proceed to the next step.
 - If your device is NOT listed, click the **Register Smart Device** button (see Figure 8), enter your device's serial number, and then click the **Register Smart Device** button (see Figure 9).

FIGURE 7 Click the LiMAN button

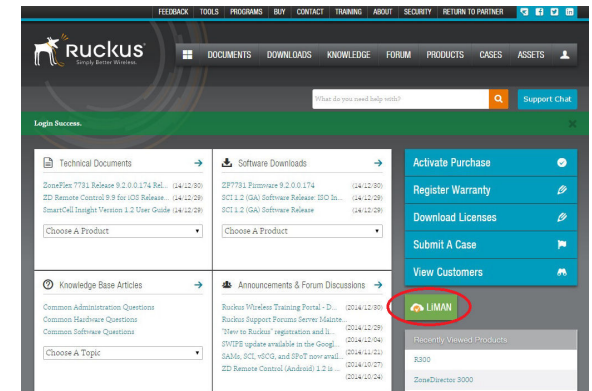


FIGURE 8 Click the serial number of your device or click Register Smart Device

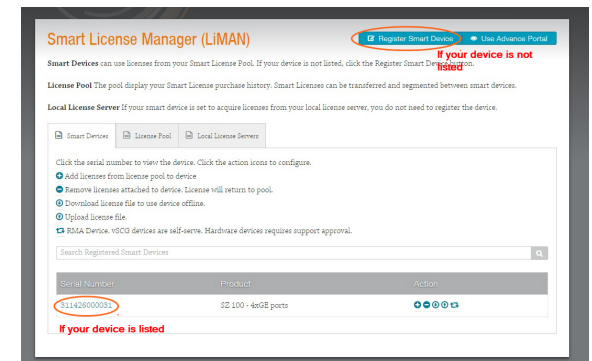
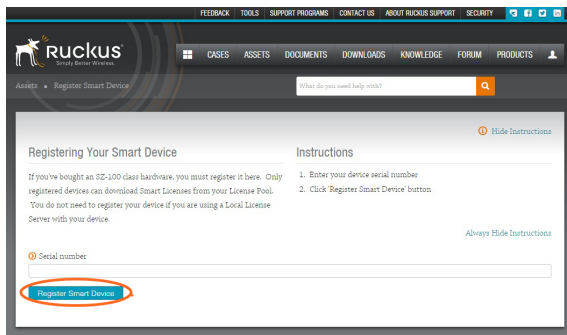


FIGURE 9 Enter your device's serial number and click Register Smart Device



8. Click the **+ License** button (see Figure 10), enter the number of licenses to add in **Qty to Add**, and click the **Add License** button (see Figure 11). Repeat for all licenses.

FIGURE 10 Click + License

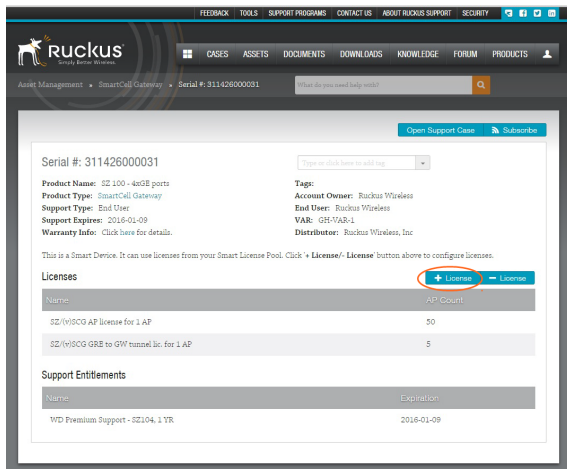
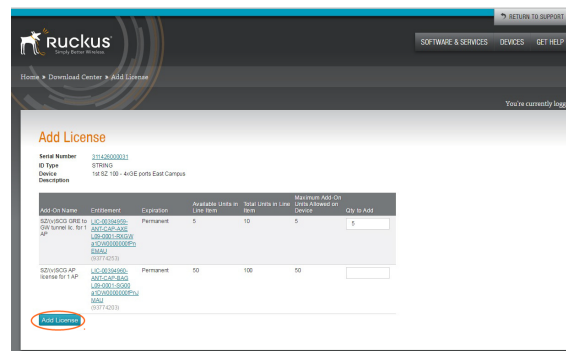


FIGURE 11 Enter the number of licenses to add in Qty to Add and click Add License



You have completed activating a SZ300's licenses.

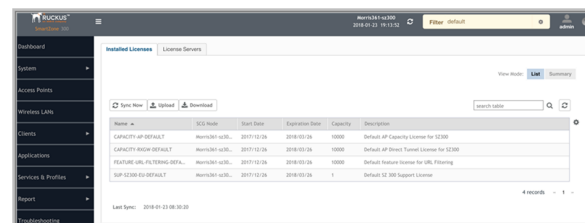
Step 6: Sync the SZ300 with LiMAN

After you have activated the SZ300's licenses on the Ruckus Support Portal, the SZ300 must be synced with the Smart License server. This will enable the User's ability to assign licenses to and back from a SZ300 or assign them to another SZ300.

To physically manage the distribution of licenses from the Support Portal to the actual SZ300, do one of the following:

- Connect the SZ300 directly to the Internet. On the SmartZone web interface, go to the **Administration > License page**, and then click the **Sync License with Server** button to sync the SZ300 with the SmartLicense server.

FIGURE 12 Sync the SZ300 with the SmartLicense server



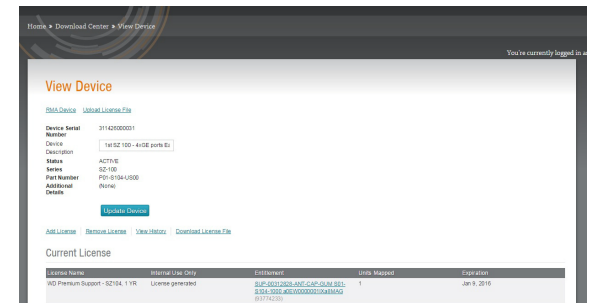
- In the event that the SZ300 is disconnected from the Internet, you can download the actual licenses from the Support Portal and manually upload them to the specific SZ300. See the Syncing Licenses on an Offline (No Internet Connection) SZ300 section.

You have completed activating the capacity or support license for the SZ300 device.

Syncing License on an Offline (No Internet Connection) SZ300

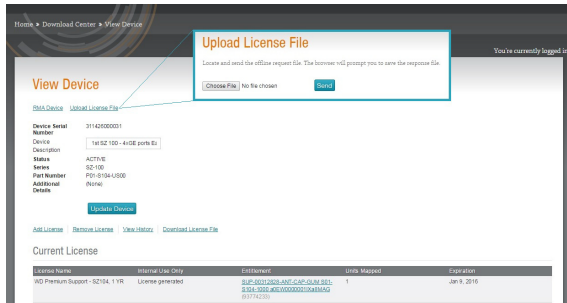
1. On the **Add License** page of LiMAN, click the SZ300's serial number. The **View Device** page appears, as shown in the following figure.

FIGURE 13 The View Device page



2. Click **Download License File**.
The license file is saved to the client.
3. On the SZ300 web interface, go to **Administration > License**. In the **Upload License** section (see Figure 12 on page 4), click the **Browse** button, and select the license file from your client to upload it to the SZ300.
4. On the SZ300 web interface, go to the **Administration > License**. In the **Download License** section, click the **Download** button to download the license file from the SZ300 to your client.
5. Go back to the LiMAN portal on the Ruckus Support website, and perform the following steps:
 - Go to the **View Device** page, see Figure 13.
 - Click **Upload License File**.
 - Click the **Choose File** button (see Figure 14), and select the license file from your client.
 - Click **Send** to complete the offline License synchronization.

FIGURE 14 Click the Choose File button



You have completed activating licenses on an offline SZ300.

Related Documentation

Additional documentation on the SmartZone 300 and the SmartLicense platform is available for download from the Ruckus Support website at <https://support.ruckuswireless.com>.

© 2018 ARRIS Enterprises LLC. All rights reserved.

ARRIS, the ARRIS logo, Ruckus, Ruckus Wireless, the Ruckus logo, and the Big Dog design are trademarks of ARRIS International plc and/or its affiliates. All other trademarks are the property of their respective owners.